



# OpenFabrics Alliance

## Interoperability Logo Group (OFILG)

### May 2014 Logo Event Report

**UNH-IOL – 121 Technology Drive, Suite 2 – Durham, NH 03824 – +1-603-862-0090**  
**OpenFabrics Interoperability Logo Group (OFILG) – ofalab@iol.unh.edu**

Martin Schlining  
 DataDirect Networks  
 8320 Guilford Road Suite D  
 Columbia, MD 21046-2833

Date: 15 July 2014  
 Report Revision: 1.1  
 OFED Version on Compute Nodes: 3.12  
 Operating System on Compute Nodes: Scientific Linux 6.5

Enclosed are the results from OFA Logo testing performed on the following devices under test (DUTs):  
*DataDirect Networks SFA7700*  
*DataDirect Networks SFA10K*  
*DataDirect Networks SFA12K*

The test suite referenced in this report is available at the UNH-IOL website. Release 1.50 (2014-May-6) was used.

<http://iol.unh.edu/ofatestplan>

The following table highlights the Mandatory test results required for the OpenFabrics Interoperability Logo for the SRP Target over InfiniBand device class per the Test Plan referenced above and the current OpenFabrics Interoperability Logo Program (OFILP).

Test Procedures	IWG Test Status	Result/Notes
<a href="#">11.1: Link Initialization</a>	Mandatory	PASS
<a href="#">11.2: Fabric Initialization</a>	Mandatory	PASS
<a href="#">11.5: SM Failover and Handover</a>	Mandatory	PASS
<a href="#">11.6: SRP</a>	Mandatory	PASS

Summary of all results follows on the second page of this report.  
 For Specific details regarding issues, please see the corresponding test result.

Testing Completed 11 June 2014

Glenn A. Martin  
[gmartin@iol.unh.edu](mailto:gmartin@iol.unh.edu)



Review Completed 15 July 2014

Edward Mossman  
[emosman@iol.unh.edu](mailto:emosman@iol.unh.edu)

## Result Summary

The Following table summarizes all results from the event pertinent to this IB device class (SRP Target over InfiniBand).

Test Procedures	IWG Test Status	Result/Notes
<a href="#">11.1: Link Initialization</a>	Mandatory	PASS
<a href="#">11.2: Fabric Initialization</a>	Mandatory	PASS
<a href="#">11.5: SM Failover and Handover</a>	Mandatory	PASS
<a href="#">11.6: SRP</a>	Mandatory	PASS

## Digital Signature Information

This document was signed using an Adobe Digital Signature. A digital signature helps to ensure the authenticity of the document, but only in this digital format. For information on how to verify this document's integrity proceed to the following site:

[http://www.iol.unh.edu/certifyDoc/certificates\\_and\\_fingerprints.php](http://www.iol.unh.edu/certifyDoc/certificates_and_fingerprints.php)



If the document status still indicated "Validity of author NOT confirmed", then please contact the UNH-IOL to confirm the document's authenticity. To further validate the certificate integrity, Adobe 9.0 should report the following fingerprint information:

MD5 Fingerprint: 41 1E 00 9F 79 4D 02 EF E6 95 65 57 A4 71 4F 9F  
SHA-1 Fingerprint: 44 51 9E 22 66 59 1A D3 A1 F9 0B EE BD 01 90 80 BE 61 A4 A8

## Report Revision History

- v1.0 Initial working copy
- v1.1 Updated DUT names to reflect product naming conventions

## Configuration Files

Description	Attachment
Scientific Linux 6.5 Configuration File	
OFED 3.12 Configuration File	

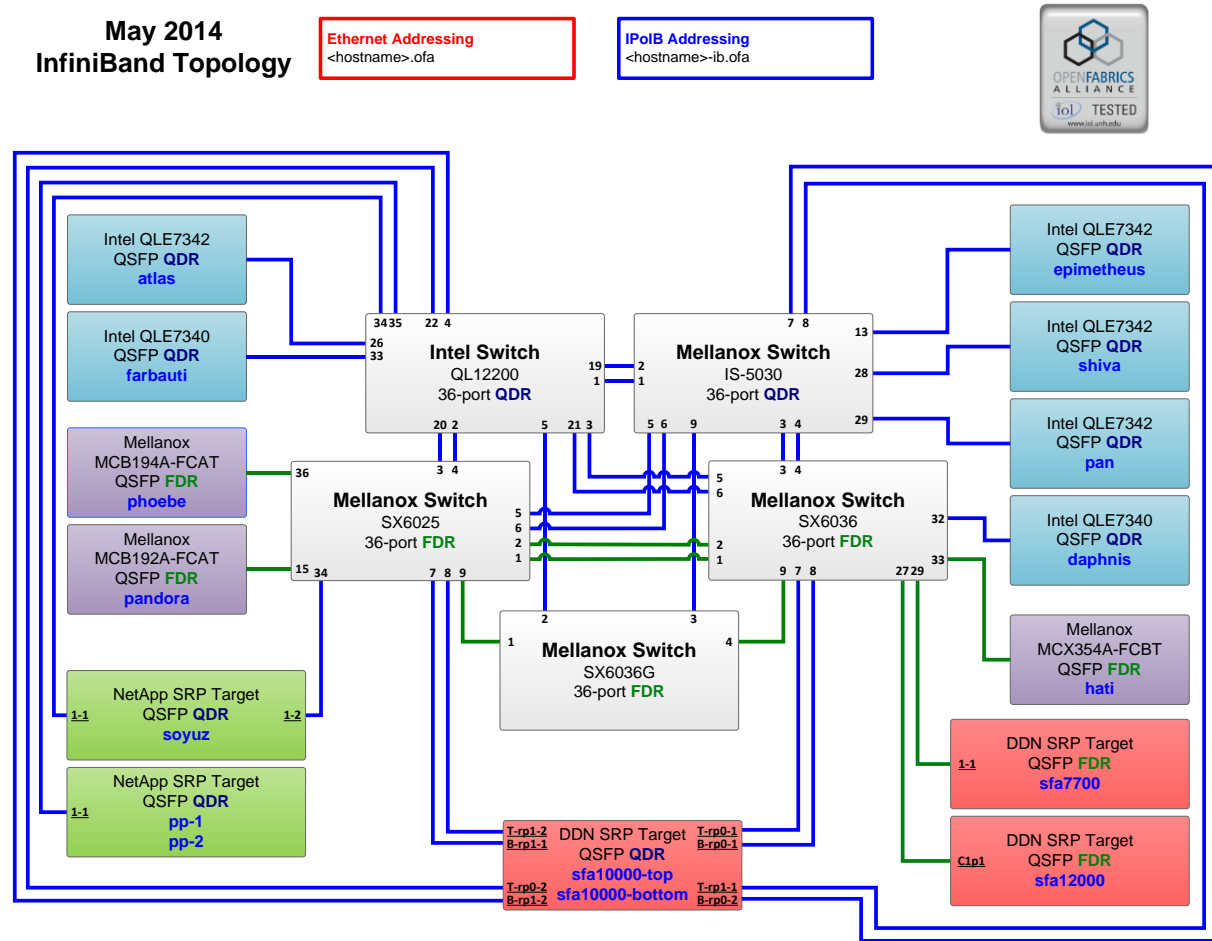
## Result Key

The following table contains possible results and their meanings:

Result:	Description:
<b>PASS</b>	The Device Under Test (DUT) was observed to exhibit conformant behavior.
<b>PASS with Comments</b>	The DUT was observed to exhibit conformant behavior however an additional explanation of the situation is included.
<b>Qualified PASS</b>	The DUT was observed to exhibit conformant behavior, with the exception of fault(s) or defect(s) which were previously known.
<b>FAIL</b>	The DUT was observed to exhibit non-conformant behavior.
<b>Warning</b>	The DUT was observed to exhibit behavior that is not recommended.
<b>Informative</b>	Results are for informative purposes only and are not judged on a pass or fail basis.
<b>Refer to Comments</b>	From the observations, a valid pass or fail could not be determined. An additional explanation of the situation is included.
<b>Not Applicable</b>	The DUT does not support the technology required to perform this test.
<b>Not Available</b>	Due to testing station limitations or time limitations, the tests could not be performed.
<b>Borderline</b>	The observed values of the specific parameters are valid at one extreme and invalid at the other.
<b>Not Tested</b>	Not tested due to the time constraints of the test period.

# DUT and Test Setup Information

Figure 1: The IB fabric configuration utilized for any tests requiring a multi-switch configuration is shown below.



DUT #1 Details			
Manufacturer:	DataDirect Networks	Firmware Revision:	2.2.0.2 19593
Model:	SFA10K	Hardware Revision:	NA
Speed:	QDR	Located in Host:	NA
Firmware MD5sum:	NA		
Additional Comments / Notes:			

DUT #2 Details			
Manufacturer:	DataDirect Networks	Firmware Revision:	2.2.0.2 19593
Model:	SFA12K	Hardware Revision:	NA
Speed:	FDR	Located in Host:	NA
Firmware MD5sum:	NA		
Additional Comments / Notes:			

OFA Logo Event Report – May 2014

DUTs: DataDirect Networks SFA7700; DataDirect Networks SFA10K; DataDirect Networks SFA12K

<b>DUT #3 Details</b>			
Manufacturer:	DataDirect Networks	Firmware Revision:	2.2.0.2 19593
Model:	SFA7700	Hardware Revision:	NA
Speed:	FDR	Located in Host:	NA
Firmware MD5sum:	NA		
<b>Additional Comments / Notes:</b>			

## Mandatory Tests – IB Device Test Results:

### 11.1: Link Initialization

Results	
Part #1:	PASS
Discussion:	
All links established with the DUT were of the proper link speed and width.	

Link Partner	SFA10K	SFA7700	SFA12K
Intel 12200 (Switch) – QDR	PASS	PASS	PASS
Mellanox SX6025 (Switch) – FDR	PASS	PASS	PASS
Mellanox SX6036 (Switch) – FDR	PASS	PASS	PASS
Mellanox IS-5030 (Switch) – QDR	PASS	PASS	PASS
Mellanox SX6036G (Switch) – FDR	PASS	PASS	PASS
DataDirect Networks SFA12K (SRP Target) – FDR	NA	NA	NA
DataDirect Networks SFA10K (SRP Target) – QDR	NA	NA	NA
DataDirect Networks SFA7700 (SRP Target) – FDR	NA	NA	NA
NetApp Soyuz (SRP Target) – QDR	NA	NA	NA
NetApp Pikes Peak (SRP Target) – QDR	NA	NA	NA
Host: hati	HCA: MCX354A-FCBT (FDR)	PASS	PASS
Host: phoebe	HCA: MCB194A-FCAT (FDR)	PASS	PASS
Host: pandora	HCA: MCB192A-FCAT (FDR)	PASS	PASS
Host: atlas	HCA: QLE7342 (QDR)	PASS	PASS
Host: daphnis	HCA: QLE7340 (QDR)	PASS	PASS

### 11.2: Fabric Initialization

Subnet Manager	Result
OpenSM	PASS
Result Discussion:	
All subnet managers used while testing with OFED 3.12 were able to correctly configure the selected topology.	

### 11.5: SM Failover and Handover

SM Pairings	Result
OpenSM	PASS
Result Discussion:	
OpenSM was able to properly handle SM priority and state rules.	

**11.6: SRP**

Subnet Manager	Result
OpenSM	PASS
<b>Result Discussion:</b>	
Core and extended SRP communications between all HCAs and all SRP targets succeeded while OpenSM was in control of the fabric.	