



OpenFabrics Alliance

Interoperability Logo Group (OFILG)

July 2017 Logo Report



UNH-IOL – 21 Madbury Rd., Suite 100 – Durham, NH 03824 – +1-603-862-0090
OpenFabrics Interoperability Debug Group (OFILG) – ofalab@iol.unh.edu

Martin Schlining
 DDN
 8320-D Guilford Road
 Columbia, MD 21046

Date: August 29, 2017
 Report Revision: 1.0
 OFED Version on Compute Nodes: 4.8
 Operating System on Compute Nodes: Scientific Linux 7.3

Enclosed are the results from OFA Debug testing performed on the following devices under test (DUTs):

SFA7700
SFA12000
SFA14000

The test suite referenced in this report is available at the UNH-IOL website. Release 2.05-v2 (2017-03-22) was used.

<http://iol.unh.edu/ofatestplan>

The following table highlights the Mandatory test results required for the OpenFabrics Interoperability Debug for the SRP Target over InfiniBand device class per the Test Plan referenced above and the current OpenFabrics Interoperability Debug Program (OFILP).

Test Procedures	IWG Test Status	Result/Notes
11.1: Link Initialization	Mandatory	PASS
11.2: Fabric Initialization	Mandatory	PASS
11.5: SM Failover and Handover	Mandatory	PASS
11.6: SRP	Mandatory	PASS

Summary of all results follows on the second page of this report.
 For Specific details regarding issues, please see the corresponding test result.

Testing Completed August 29, 2017
 Stefan Oesterreich
soesterreich@iol.unh.edu

Adam LeBlanc
aleblanc@iol.unh.edu

Reviewed & Issued September 5, 2017

Bob Noseworthy
ren@iol.unh.edu

Result Summary

The Following table summarizes all results from the event pertinent to this IB device class (SRP Target over InfiniBand).

Test Procedures	IWG Test Status	Result/Notes
11.1: Link Initialization	Mandatory	PASS
11.2: Fabric Initialization	Mandatory	PASS
11.5: SM Failover and Handover	Mandatory	PASS
11.6: SRP	Mandatory	PASS

Digital Signature Information

This document was signed using an Adobe Digital Signature. A digital signature helps to ensure the authenticity of the document, but only in this digital format. For information on how to verify this document's integrity proceed to the following site:

<http://www.iol.unh.edu/certifyDoc/>



If the document status still indicated "Validity of author NOT confirmed", then please contact the UNH-IOL to confirm the document's authenticity. To further validate the certificate integrity, Adobe 9.0 should report the following fingerprint information:

MD5 Fingerprint: 7B 9B 0C 40 55 27 86 C0 F7 4A A3 45 DB F9 40 6E
SHA-1 Fingerprint: 03 59 97 71 28 ED 17 7F 1A 83 C5 D0 1D A8 2B 98 3E 2F 0F E7

Report Revision History

- v1.0 Initial working copy

Configuration Files

Description	Attachment
Scientific Linux 7.3 Configuration File	
OFED 4.8 Configuration File	

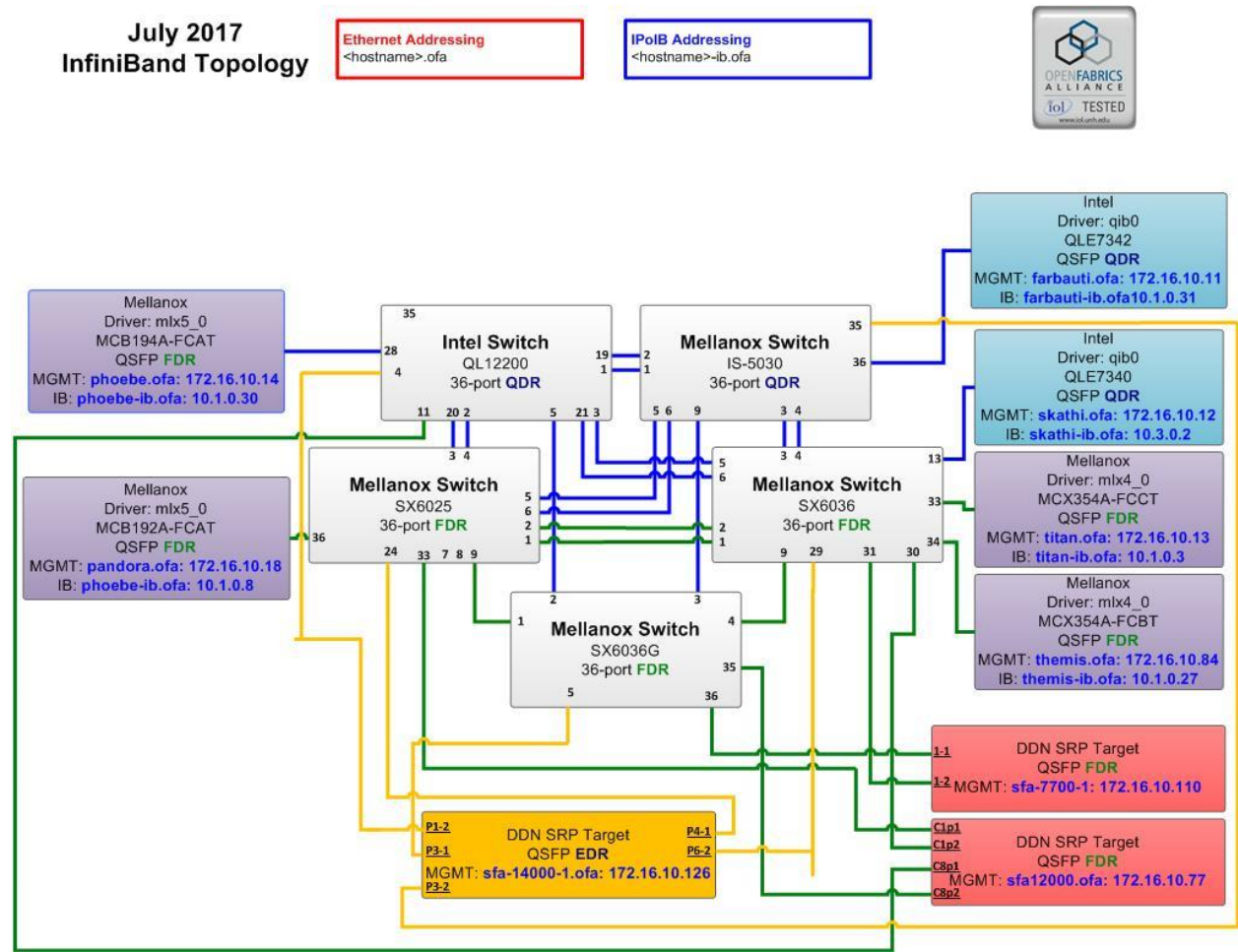
Result Key

The following table contains possible results and their meanings:

Result:	Description:
PASS	The Device Under Test (DUT) was observed to exhibit conformant behavior.
PASS with Comments	The DUT was observed to exhibit conformant behavior however an additional explanation of the situation is included.
Qualified PASS	The DUT was observed to exhibit conformant behavior, with the exception of fault(s) or defect(s) which were previously known.
FAIL	The DUT was observed to exhibit non-conformant behavior.
Warning	The DUT was observed to exhibit behavior that is not recommended.
Informative	Results are for informative purposes only and are not judged on a pass or fail basis.
Refer to Comments	From the observations, a valid pass or fail could not be determined. An additional explanation of the situation is included.
Not Applicable	The DUT does not support the technology required to perform this test.
Not Available	Due to testing station limitations or time limitations, the tests could not be performed.
Borderline	The observed values of the specific parameters are valid at one extreme and invalid at the other.
Not Tested	Not tested due to the time constraints of the test period.

DUT and Test Setup Information

Figure 1: The IB fabric configuration utilized for any tests requiring a multi-switch configuration is shown below.



OFA Debug Event Report – July 2017
DUTs: SFA7700, SFA12000, SFA14000

DUT #1 Details			
Manufacturer:	DDN	Firmware Revision:	3.1.2.0.35872
Model:	SFA12000	Hardware Revision:	0
Speed:	FDR	Located in Host:	N/A
Firmware MD5sum:	d14326918f2ed0487732ee54c4101e		
Additional Comments / Notes:			

DUT #2 Details			
Manufacturer:	DDN	Firmware Revision:	3.1.2.0.35872
Model:	SFA7700	Hardware Revision:	0
Speed:	FDR	Located in Host:	N/A
Firmware MD5sum:	d14326918f2ed0487732ee54c4101e		
Additional Comments / Notes:			

DUT #3 Details			
Manufacturer:	DDN	Firmware Revision:	3.1.2.0.35872
Model:	SFA14000	Hardware Revision:	0
Speed:	EDR	Located in Host:	N/A
Firmware MD5sum:	d14326918f2ed0487732ee54c4101e		
Additional Comments / Notes:			

Mandatory Tests – IB Device Test Results:

11.1: Link Initialization

Results	Result
Part #1:	PASS
Discussion:	
All links established with the DUT were of the proper link speed and width.	

11.2: Fabric Initialization

Subnet Manager	Result
OpenSM	PASS
Result Discussion:	
All subnet managers used while testing with OFED 4.8 were able to correctly configure the selected topology.	

11.5: SM Failover and Handover

SM Pairings	Result
OpenSM	PASS
Result Discussion:	
OpenSM was able to properly handle SM priority and state rules.	

11.6: SRP

Subnet Manager	Result
OpenSM	PASS
Result Discussion:	
Core and extended SRP communications between all HCAs and all SRP targets succeeded while OpenSM was in control of the fabric.	
All nodes were tested with a modified /etc/srp_daemon.conf which contained: a max_sect=65535,max_cmd_per_lun=16,queue_size=32	
The ib_srp module was loaded with the additional parameter of "ch_count=1".	
Both of the above modifications were used to work around OpenFabrics Bug #2634.	